

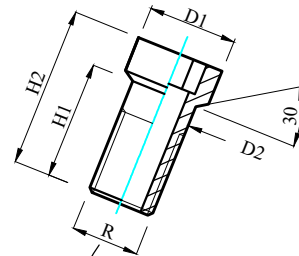
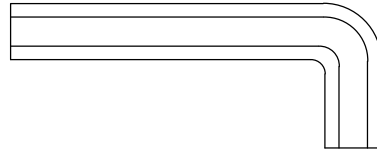
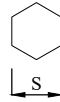


HOLLOW SCREW - VIS CREUSE

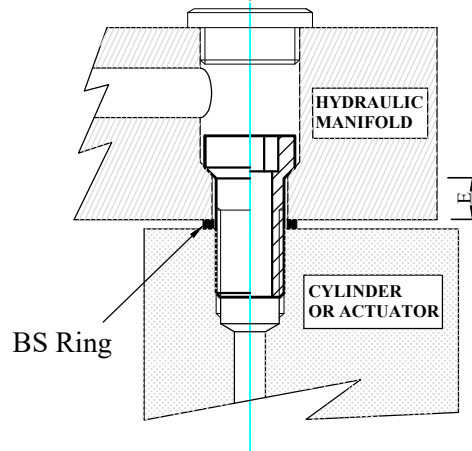
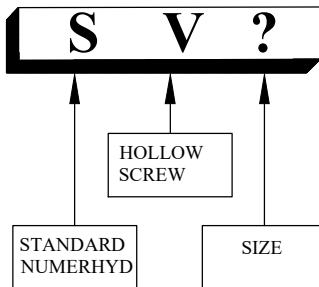
SV

A21/1

- Stud thread BSP Parallel (brunish steel)
- Max service pressure and tightening torque (see table below)
- BS Ring (NBR bonded Seal and Steel Ring)



MODEL CODE



DIMENSIONS

- BS Ring supplied

MODEL	R	D1	D2	H1	H2	E	S	BS Ring	weight (g)	N.m	Bar
SV1/4G	1/4"	14.9	13.2	23.5	29	10	8	13.74*20.57*2.03	21g	45	400
SV3/8G	3/8"	18.5	16.7	23.5	29	10	10	17.28*23.80*2.03	33g	70	400
SV1/2G	1/2"	24.0	21.0	30.0	36	14	14	21.54*28.58*2.49	54g	120	400
SV3/4G	3/4"	29.5	26.5	38.0	48	20	19	27.05*34.93*2.49	105g	230	315
SV1G	1"	38.0	33.2	39.5	53	20	22	33.89*42.80*3.38	195g	320	250